

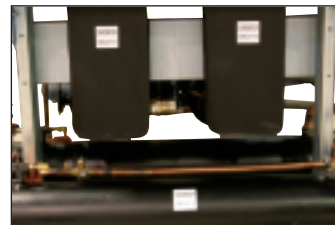


HEAT & COOL

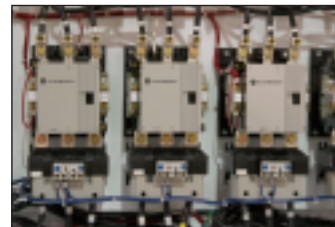
RC SERIES SCROLL COMPRESSOR CHILLERS



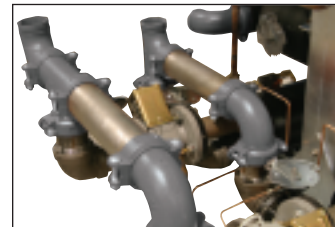
Single or tandem high efficiency scroll compressors



Stainless steel brazed plate evaporator



Close-up of the inside electrical panel



Optional water-cooled condenser manifold

R SERIES CENTRAL CHILLING STATIONS

The newest line of central chillers from AEC incorporates the latest in refrigeration technology - rotational compression.

RC SERIES - 30 TO 100 TONS

- Hermetically sealed scroll compressors
- Stainless steel brazed plate evaporators
- Shell & tube condensers with water regulating valves (water cooled)
- Fin & tube condensers with -20°F ambient operation (remote air cooled)
- R-22 refrigerant
- All refrigerant safeties



1100 E Woodfield Road
Schaumburg, IL 60173 USA
Tel. 847-273-7700 Fax 847-273-7804

www.aecinternet.com





HEAT & COOL

RC SERIES SCROLL COMPRESSOR CHILLERS



STANDARD PLC SCREEN (Allen Bradley Micrologix 1500 with PanelView 300 Micro)

- Control up to 4 compressors in 1 or 2 circuits
- Alarm condition indicators for safety devices including motor overloads (compressor or pump), flow switches, freezestats, refrigerant pressures, voltage/phase sensor, high and low temperature alarms
- Hour meters to accumulate run time in compressors or pumps
- Chilled water pumps: Variable 1 to 3 process pumps and recirculation pumps. In systems with multiple pumps, they may be altered at specific intervals.
- Network capable over DH-485 to communicate with a chiller with the Advanced Control Package



ADVANCED PLC SCREEN (Allen Bradley SLC 5/04 with PanelView 1000)

- Cooling Tower Fans: Variable 1 to 4 fans, to be controlled with PID algorithm. Operator may choose to alternate the fans at specific intervals
- Cooling Tower Pumps: Variable 1 to 3 process pumps and recirculation pumps. In systems with multiple pumps, they may be alternated at specific intervals
- Chemical Feed Pumps: The software may control up to 2 chemical feed pumps. Chemical feed pumps will be operated such that the pump will run for a designated time at each completion of a specified time
- Alarm condition indicators for safety devices including motor overloads (compressor or pump), flow switches, freezestats, refrigerant pressures, voltage/phase sensor, high and low temperature alarms
- Hour meters to accumulate run time in compressors or pumps
- Chilled water pumps: Variable 1 to 3 process pumps and recirculation pumps. In systems with multiple pumps, they may be altered at specific intervals
- Network capable over DH-485 to communicate with a chiller with another Advanced Control Package or Standard Control Package



1100 E Woodfield Road
Schaumburg, IL 60173 USA
Tel. 847-273-7700 Fax 847-273-7804



WHITLOCK/
MATERIAL
HANDLING



HEAT & COOL



BLEND &
RECLAIM



NELMOR/
GRANULATE



DOWNSTREAM
EXTRUSION



AUTOMATE



SYSTEMS
CONTRACTING



SERVICE