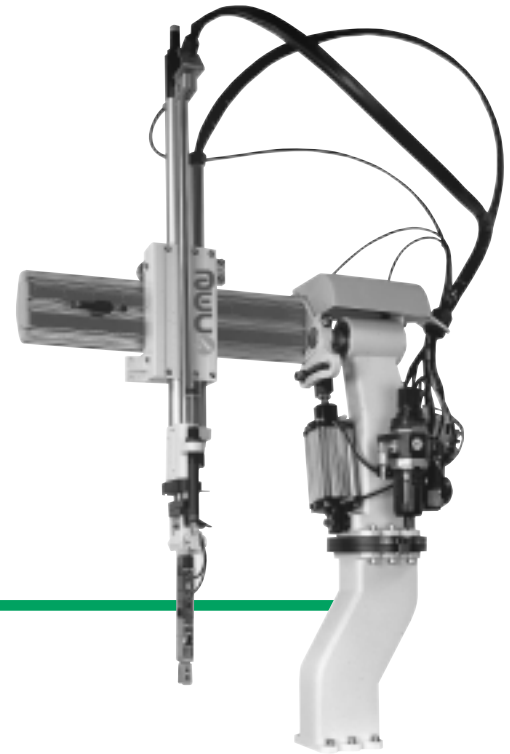




APEX YS SERIES SPRUE PICKERS

The AEC YS Series pickers feature high payload capacities, a proven design and a state-of-the-art control system. These pickers are backed by AEC's worldwide network of technical, sales and service support personnel, including experienced design and application engineers.

YS Series sprue pickers from AEC are designed to be a cost-effective sprue removal robot and feature a single stage vertical arm for simple operation. The standard controller provides teach-programmable sequences for maximum flexibility.



YS Series Sprue Picker

STANDARD FEATURES

- *Slow-down at part release*
- *Main arm swing angle: 60°-90° (Adjustable)*
- *Compressed air pressure: 60-90 psi*
- *Effective payload: 8 lbs*
- *Power requirement: 120 or 240 VAC, approximately 40 VA*
- *State-of-the-art controller*
 - *Ten standard sequences*
 - *Ten user-programmable sequences*
 - *Two spare outputs, one spare input*
 - *Built-in help and diagnostics*
 - *Standard SPI interface with connector*
- *Easy strip adjustment*
 - *No tools needed for strip adjustments*
- *Simple swing adjustment*
 - *Quick and easy adjustment of swing direction and swing angle*
- *Pivoting base*
 - *Easy adjustment and pivot of robot position allows robot to pivot out of the way for mold changes*
- *Patented gripper*
 - *Patented sprue gripper is strong and compact*
 - *Pressure differential switch for sprue/runner detection on gripper eliminates mechanical switch adjustment and increases reliability*

OPTIONAL FEATURES

- *Wrist rotate B-90*
- *Vacuum grip circuit including a generic vacuum tooling kit and B-90 wrist rotate*
- *Spare parts kit*
- *Mold spray system with controller (excludes nozzles)*
- *Swing out home position for rack molds*
- *Non-SPI version*
- *Spanish version controller*
- *Tool-free adjustments*

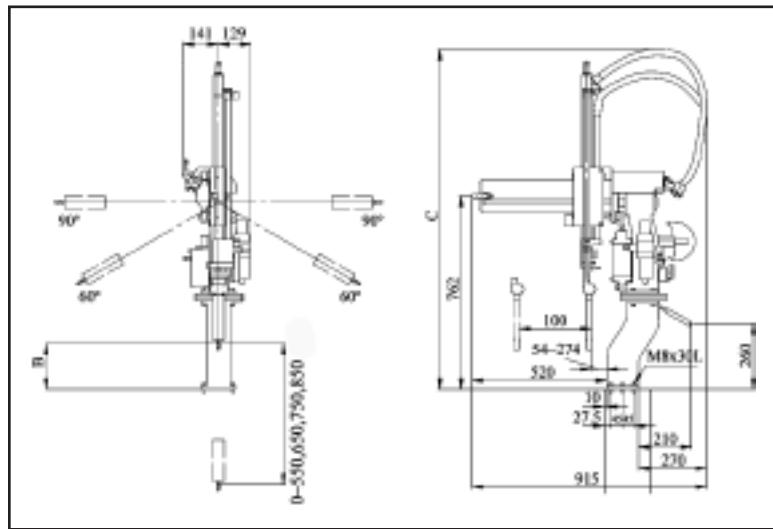
APEX YS SERIES SPRUE PICKERS

AUTOMATE

SPECIFICATIONS

Model	Vertical Stroke (mm/in)	IMM Range (tons)	Dry Cycle (sec)		Gripper Heights (mm/in) (B)	Overall Height (mm/in) (C)	Net Weight (kg)
			Take-Out	Overall			
YS-550	550/21.7	60-180	0.7	3.2	115-315/4.5-12.4	1188-1388/ 46.8-54.6	33.5
YS-550W					35-235/1.8-9.3		34
YS-650	650/25.6	120-250	0.8	3.4	115-315/4.5-12.4	1288-1488/ 50.7-58.6	34
YS-650W					35-235/1.8-9.3		34.5
YS-750	750/29.5	200-350	1.0	3.8	75-275/3.0-10.8	1388-1588/ 54.6-62.5	34.5
YS-750W					0.0-190/0.0-7.5		35
YS-850	850/33.5	300-450	1.2	4.0	75-275/3.0-10.8	1488-1688/ 58.6-66.5	35
YS-850W					0.0-190/0.0-7.5		35.5

W: Wrist Rotation



YS-xxx